

# Bias Tees



RLC Electronics' Bias Tees offer excellent performance over the frequency range of .1 to 18 GHz. These units are used to inject a DC current or voltage into an RF circuit without affecting the

flow of RF through the main transmission path. Typical applications include biasing amplifiers, DC return, DC blocking, as well as other various digital and analog uses.

## Specifications

BT<sup>-1-2</sup>

Model Number	Frequency Range (GHz)	Connectors (as req'd)
BT-0115	1 - 1.5	IN/OUT
BT-1025	1 - 2.5	IN/OUT
BT-2050	2 - 5.0	IN/OUT
BT-40124	4 - 12.4	IN/OUT
BT-70180	7 - 18.0	IN/OUT

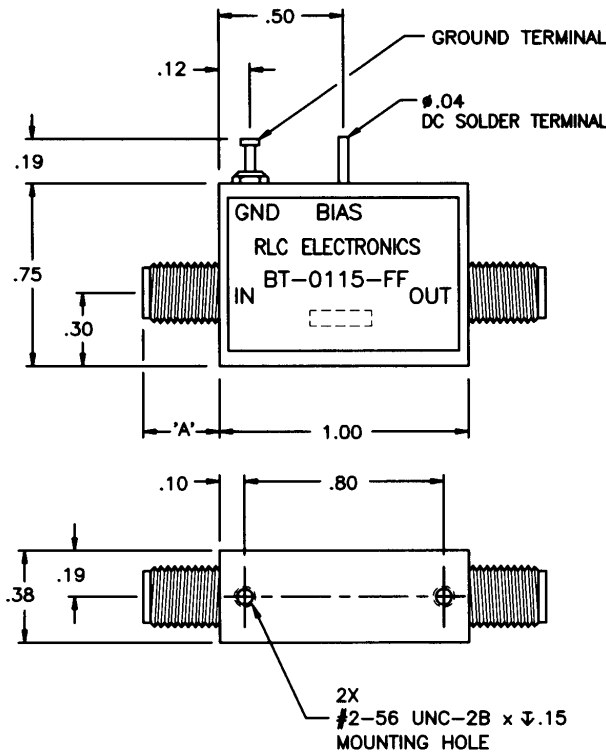
**Impedance:** 50 ohms  
**RF Power:** 25 watts average  
**DC Current:** 750 ma maximum  
**VSWR:** 1.3:1 maximum

**Insertion Loss:** .4dB maximum  
**Environment:** MIL-E-5400, Class 1A except operating temperature -55°C to +85°C

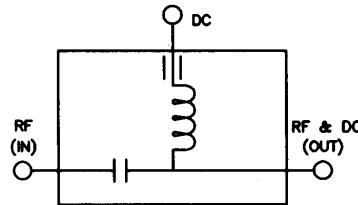
To designate the bias tee desired use:

- (1) 0115, 1025, etc. for model number
- (2) (SMA) for connectors – add MM (male/male), FF (female/female), MF (male/female), FM (female/male)

Example: BT-0115-FF is a .1 – 1.5 GHz with female/female connectors Bias Tee



## Outline Drawing



Schematic

SMA CONNECTOR	'A'
M (male)	.38
F (female)	.31

Tolerances unless otherwise specified are: .xx ± .02, .xxx ± .005



**RLC ELECTRONICS, INC.**

83 Radio Circle, Mount Kisco, New York 10549 • Telephone: 914-241-1334 • Fax: 914-241-1753  
 e-mail: sales@rlcelectronics.com • www.rlcelectronics.com