

Standard High Pass Filters



RLC Electronics' High Pass Filters are designed for operation over the frequency range of 100 MHz to 10.0 GHz. Sharp rejection below the cutoff frequency is assured in the use of these filters. Low insertion loss and low VSWR in the pass band are

accomplished by the utilization of impedance matching, transforming end sections, and a precise coaxial fabrication. Rugged light weight construction makes the units suitable for extreme environmental conditions.

Specifications

F-1-2-3

Model Number	Pass Band (GHz)	3 dB Point Typical (GHz)	30 dB Point Typical (GHz)	60 dB Point Stop Band (GHz)
F-20-100-	.1 – .20	.09	.07	DC -.05
F-20-200-	.2 – .40	.18	.14	DC -.10
F-20-300-	.3 – .60	.27	.21	DC -.15
F-20-400-	.4 – .80	.36	.28	DC -.20
F-20-500-	.5 – 1.00	.45	.35	DC -.25
F-20-600-	.6 – 1.20	.54	.42	DC -.30
F-20-800-	.8 – 1.60	.72	.60	DC -.40
F-20-1000-	1.0 – 2.00	.90	.70	DC -.50
F-40-1.0-	1.0 – 2.00	.90	.70	DC -.50
F-40-1.5-	1.5 – 3.00	1.35	1.05	DC -.75
F-40-2.0	2.0 – 4.00	1.80	1.40	DC -1.00
F-40-3.0	3.0 – 6.00	2.70	2.10	DC -1.50
F-40-4.0	4.0 – 8.00	3.60	2.80	DC -2.00
F-40-5.0	5.0 – 10.00	4.50	3.50	DC -2.50
F-40-6.0	6.0 – 12.00	5.40	4.20	DC -3.00
F-40-8.0	8.0 – 16.00	7.20	5.60	DC -4.00
F-40-10.0	10.0 – 18.00	9.20	7.00	DC -5.00

Pass Band VSWR: 1.6

Pass Band Insertion Loss: F-20;0.7dB max.

F-40;0.5dB max

Power Rating(Average): F-20 - 25 Watts

F-40 - 100 Watts

Impedance: 50 Ohms

Environmental: MIL-E-5400, Class 1A

Connectors: (Male & Female)

Type - Recommend Freq Range:

N DC - 12,400

BNC DC - 1,000

TNC DC - 15,000

SMA DC - 26,000

To designate the filter desired use:

(1) "20" or "40" for model number

(2) "100", "200" etc for pass band

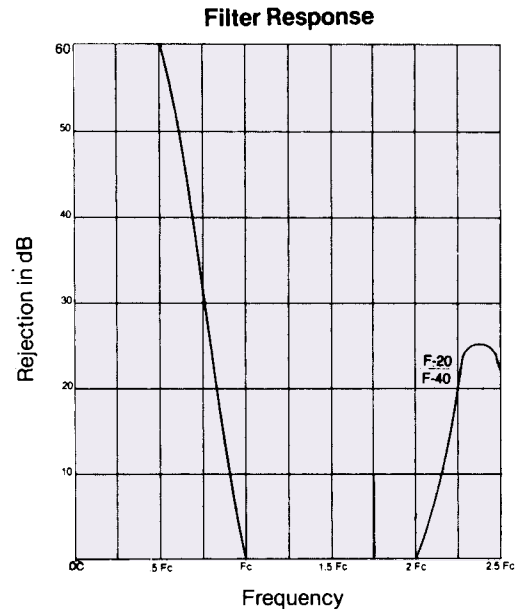
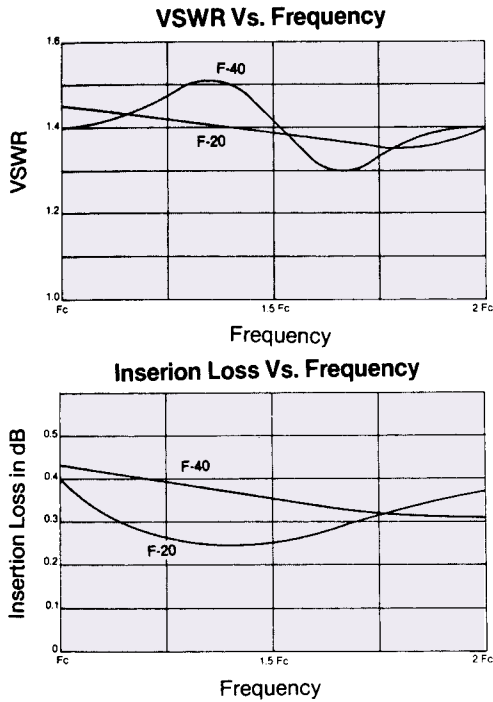
(3) "N" for type N, "B" for BNC, "T" for TNC or "R" for

SMA connectors. Add "M" or "F" for type male or female.

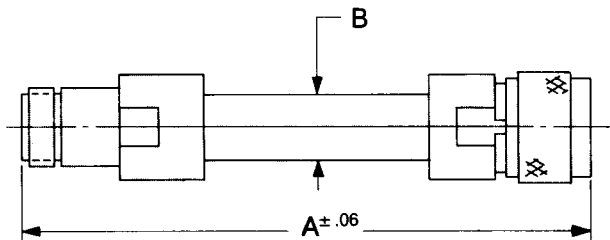
Example:F-40-10.0-R is a model 40, 10 to 18 GHz filter with type SMA connectors.



Typical Operating Curves



Outline Drawing



MODEL	A			B	WEIGHT (ounces)
	N	BNC/TNC	SMA		
F-20-100	4.04	3.83	3.44	.625	5.0
F-20-200	4.04	3.83	3.44	.625	5.0
F-20-300	4.04	3.83	3.44	.625	5.0
F-20-400	4.04	3.83	3.44	.625	5.0
F-20-500	4.04	3.83	3.44	.625	5.0
F-20-600	4.04	3.83	3.44	.625	5.0
F-20-800	4.04	3.83	3.44	.625	5.0
F-20-1000	4.04	3.83	3.44	.625	5.0
F-40-1.0	4.20	3.90	3.56	.50	5.0
F-40-1.5	4.20	3.90	3.56	.50	5.0
F-40-2.0	4.20	3.90	3.56	.50	5.0
F-40-3.0	6.28	6.00	5.68	.44	8.0
F-40-4.0	5.13	4.84	4.50	.44	7.0
F-40-5.0	4.44	4.13	3.74	.44	6.0
F-40-6.0	3.84	3.66	3.22	.44	5.5
F-40-8.0	3.32	3.00	2.72	.44	5.0
F-40-10.0	2.90	2.75	2.28	.44	5.0

Tolerances unless otherwise specified are: .xx, $\pm .02$; .xxx, $\pm .005$.



RLC ELECTRONICS, INC.

83 Radio Circle, Mount Kisco, New York 10549 • Telephone: 914-241-1334 • Fax: 914-241-1753
e-mail: sales@rlcelectronics.com • www.rlcelectronics.com